

# BS Vertriebsbüro GmbH

*Silo-Anlagenbau - "Your specialist in silo components"*

Pillauer Str. 2 · D-74336 Brackenheim  
Fon ++49 (0)7135 12409 · Fax ++49 (0)7135 933599  
e-mail: [info@bs-vertrieb.de](mailto:info@bs-vertrieb.de)

[Home](#)

[e-mail / Contact](#)

[Impressum](#)

[Allgemeine Geschäftsbedingungen](#)

## Flat Gate Types & Closing Components

- [Modular Flat Gate Valve](#)  
Type SMFS-EP

- **Modular Flat Gate Valve**  
**Type SMFS-GM**

- [Modular Flat Gate Valve](#)  
Type SMFS-HD

- [Knife Gate Valves](#)

- [Knife Gate Valves](#)

- [Butterfly Valves](#)  
(PDF)

- [Flange Mounted Valves](#)

- [Double Flanged Butterfly Valves](#)

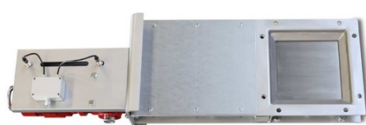
- [Wafer Pattern Butterfly Valves](#)

- [Pneumatic Pinch Valves](#)

- [2-Way-Distributor-Closing](#)

## Modular Flat Gate Valve Type SMFS-GM

**Shut-off component for silo and container systems with optimal sealing - motor driven**



### Areas of application

The SMFS type flat gate is attached to silo and vessel discharges and assures the optimal sealing of stored dusty and granular bulk goods up to 8 mm in size.

The motor driven flat gate can also be used as a proportional slide gate. This modular gate allows the installation of various drive

configurations - manual, pneumatic, or electric motor driven - on the same base frame.

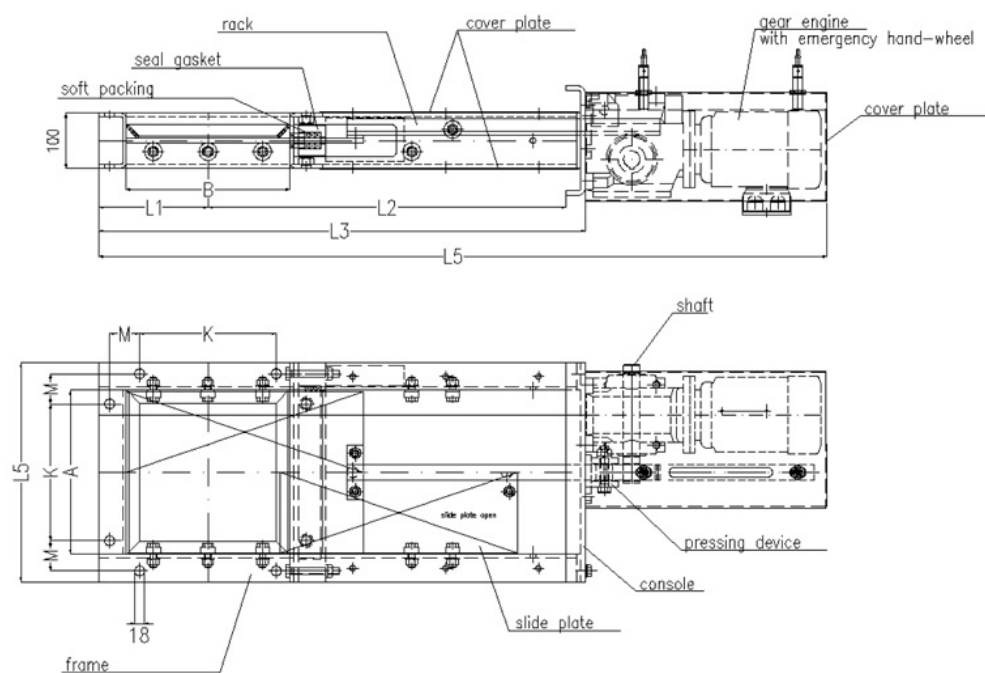
### Details / Explanation

- Grain size up to 8 mm
- High quality gate plate sealing; packing box easily adjustable and exchangeable
- Steel guide on the slide gates upper side
- Large, easily removable protective covers
- Special sizes and designs upon request

### Finish

- Frame steel or stainless steel
- Slide plate made of stainless steel 1.4301, grinded
- Finish hammer tone silver-grey
- Other finishings upon request

### Dimensional and spare parts drawing



**Dimensions Flat Gate Type SMFS - GM**

NW	200 x 200	300 x 300	400 x 400
A	200	300	400
B	200	300	400
L1	150	200	250
L2	450	650	850
L3	683	883	1083
L4	1135	1335	1635
L5	300	400	500
K	150	250	300
M	55	55	80

**Technical Data Flat Gate Type SMFS – GM**

NW	200 x 200	300 x 300	400 x 400
Weight	ca. 62 kg	ca. 70 kg	ca. 80 kg
Motor	0,75 kW; 230/400 V (3,4/2,0 A)		
Limit switch	Proximity switch IMF IG5593		
Rack and pinion drive	Module 3		

**Article numbers**

NW	200 x 200	300 x 300	400 x 400
Article number		71210270	71210274

Rights reserved to make technical alterations

[→ back to product survey](#)