

BS Vertriebsbüro GmbH

Silo-Anlagenbau - "Your specialist in silo components"

Pillauer Str. 2 · D-74336 Brackenheim
Fon ++49 (0)7135 12409 · Fax ++49 (0)7135 933599
e-mail: info@bs-vertrieb.de

[Home](#)

[e-mail / Contact](#)

[Impressum](#)

[Allgemeine Geschäftsbedingungen](#)

Flat Gate Types & Closing Components

- [Modular Flat Gate Valve](#)
[Type SMFS-EP](#)
- [Modular Flat Gate Valve](#)
[Type SMFS-GM](#)
- **Modular Flat Gate Valve**
Type SMFS-HD
- [Knife Gate Valves](#)
- [Knife Gate Valves](#)
- [Butterfly Valves](#)
[\(PDF\)](#)
- [Flange Mounted Valves](#)
- [Double Flanged Butterfly Valves](#)
- [Wafer Pattern Butterfly Valves](#)
- [Pneumatic Pinch Valves](#)
- [2-Way-Distributor-Closing](#)

Modular Flat Gate Valve Type SMFS-HD

Component for silo and container systems with optimal sealing - hand driven



Areas of application

The SMFS type flat gate is attached to silo and vessel discharges and assures the optimal sealing of stored dusty and granular bulk goods up to 8 mm in size. This modular gate allows the installation of various drive configurations - manual, pneumatic, or electric motor driven - on the same base frame.

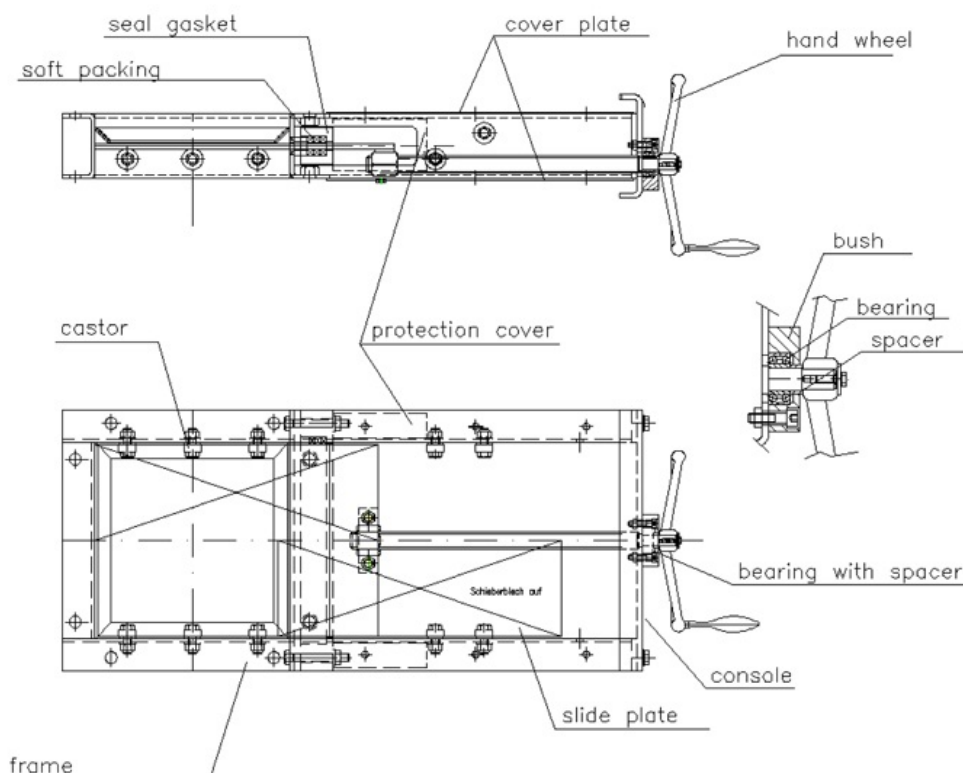
Details /Explanation

- Grain size up to 8 mm
- High quality gate plate sealing; packing box easily adjustable and exchangeable
- Steel guide on the slide gates upper side
- Large, easily removable protective covers
- Special sizes and designs upon request

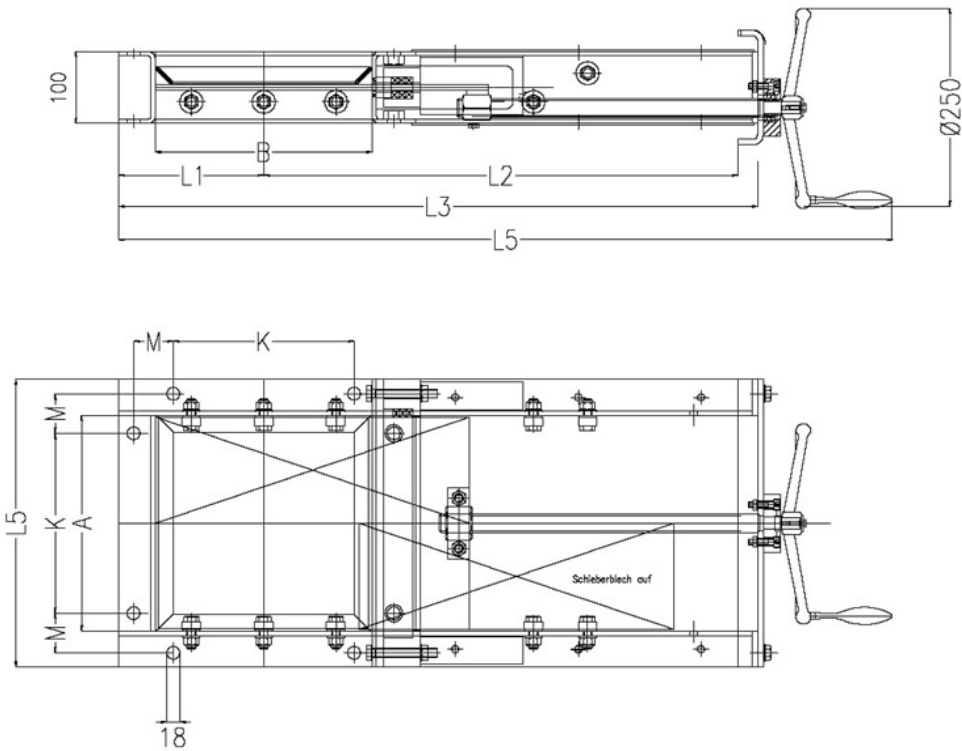
Finish

- Frame steel or stainless steel
- Slide plate made of stainless steel 1.4301, grinded
- Finish hammer tone silver-grey
- Other finishings upon request

Spare parts drawing



Dimensional drawing



Dimensions Flat Gate Type SMFS - HD

NW	200 x 200	300 x 300	400 x 400
A	200	300	400
B	200	300	400
L1	150	200	250
L2	450	650	850
L3	683	883	1083
L4	870	1070	1270
L5	300	400	500
L6	150	250	300
K	55	55	80

Technical Data Flat Gate Type SMFS - HD

NW	200 x 200	300 x 300	400 x 400
Weight	ca. 40 kg	ca. 46 kg	ca. 55 kg

Article numbers

NW	200 x 200	300 x 300	400 x 400
Article number		71210269	71210272

Rights reserved to make technical alterations

[→ back to product survey](#)