

# BS Vertriebsbüro GmbH

*Silo-Anlagenbau - "Your specialist in silo components"*

Pillauer Str. 2 · D-74336 Brackenheim  
Fon ++49 (0)7135 12409 · Fax ++49 (0)7135 933599  
e-mail: [info@bs-vertrieb.de](mailto:info@bs-vertrieb.de)

[Home](#)

[e-mail / Contact](#)

[Impressum](#)

[Allgemeine Geschäftsbedingungen](#)

## Others

- [Screening machines](#)
- [Safe, Remote Silo Blockage Removal](#)
- [Grounding Systems](#)
- [Bush Roller Chains](#)
- Silos
- Sampling
- **Flat Cable Trolleys**
- Bearings  
Upon Request
- Brushes For Various  
Areas Of Application

## Flat Cable Trolleys

### 4-wheel plastic trolley



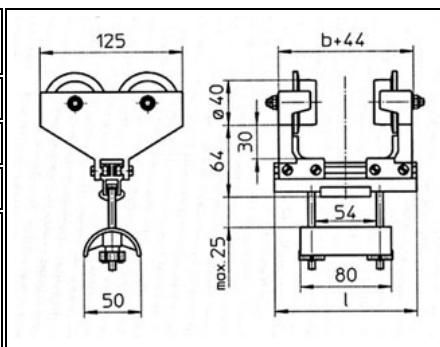
#### Material:

- Side part: plastic
- Wheel: nylon, friction bearing
- Shaft: stainless steel
- Support rail: aluminium
- Saddle: plastic
- Clamping piece: rubber
- Fasteners: galvanized steel
- Split nut: plastic

#### Application

The trolleys are designed for use with flat cables. They have a maximum cable package window opening of 54 mm wide by 25 mm high.

Type	l (mm)	max. flange width b (mm)
125	125	81
160	160	116
200	200	156
250	250	206



### 2-wheel plastic trolley



#### Material:

- Side part: plastic
- Wheel: nylon, friction bearing
- Shaft: stainless steel
- Support rail: aluminium
- Saddle: plastic
- Clamping piece: rubber
- Fasteners: galvanized steel
- Split nut: plastic

#### Application

The trolleys are designed for use with flat cables. They have a maximum cable package window opening of 54 mm wide by 25 mm high.

Type	l (mm)	max. flange width b (mm)		
125	125	81		
160	160	116		
200	200	156		

[→ back to product survey](#)

© by BS Vertriebsbüro GmbH 2015